



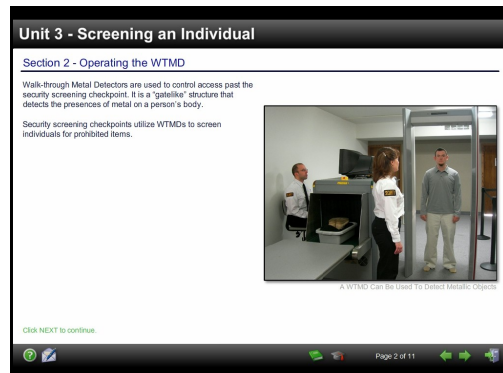
The Courthouse Screening Package teaches security personnel how to properly screen people and their belongings. Security personnel will learn how to use various detection equipment such as X-ray systems, hand-held, and walk-through metal detectors. They will also learn how to physically search individuals and belongings to ensure that dangerous and prohibited items are detected during the screening process. The Courthouse Screening Package consists of three components and provides a comprehensive training solution.

Key Features

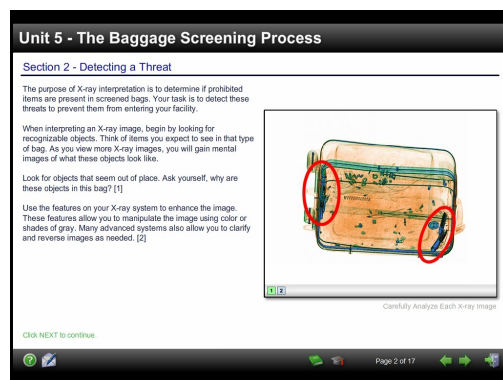
- Standardized instruction
- Customized remediation and testing
- Secure records management system
- Detailed training reports
- Flexible design
- Practical exercises to allow each student to master screening techniques

Key Benefits

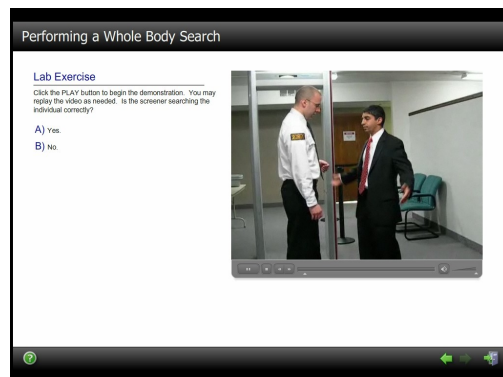
- Standardized - Each student interacts with the same training content and must achieve the same minimum passing grades. This ensures that students are trained to the same standard and is prepared to carry out his responsibilities.
- Practical - Safe and effective way for the student to practice performing critical skills he will use on the job.
- Comprehensive - The training teaches the student various screening techniques for detecting dangerous and prohibited items.
- Self-paced - Each student can work through the training at his own pace. Custom remedial instruction is used to provide the right amount of training at the right time.
- Automated Remediation - Custom remedial training based on test performance.



Operator Course Screen



Operator Course Screen



Lab Exercise Screen



Courthouse Screening Package

Three Components:

Safe Passage Training Management System -

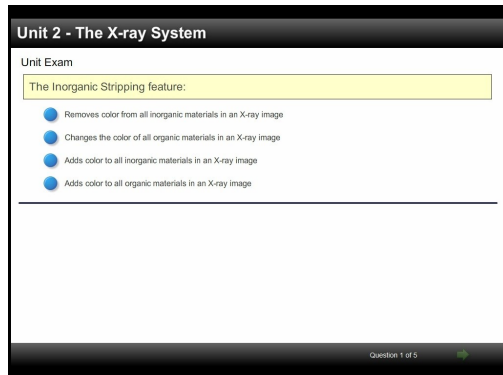
The TMS is a secure content delivery, grading, and training performance program that features collection, tracking, management, analysis, and interpretation of training data. It is designed to seamlessly integrate with Safe Passage training courses. Have the ability to monitor progress, generate reports, manage courses and users, and much more.

Security Checkpoint Training Course -

This course details the process for screening people and their belongings. The user will learn how to use detection equipment such as X-ray machines, hand-held metal detectors, and walk-through metal detectors. This course teaches the users how to physically search people and belongings. Unit exams and a comprehensive final exam test user understanding of course material. Review materials are automatically offered if a user fails a test.

X-ray Interpretation Training -

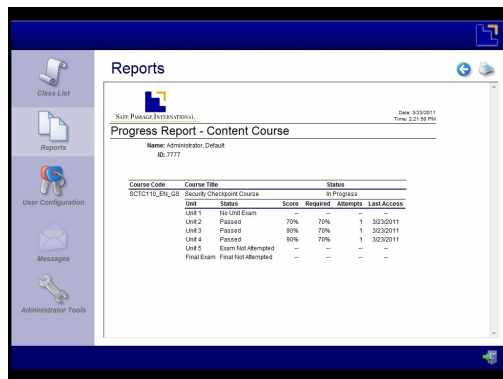
This class allows each user to improve his X-ray interpretation skills. He will learn the fundamentals of X-ray screening and interpretation. The user will be exposed to a wide variety of X-ray images and he will have to analyze it to determine if it contains any threats. Users improve their skills by advancing through three levels of difficulty based on image complexity and orientation of the threat. Apply various image adjustment features such as zoom, color, inorganic strip, organic strip, black & white, and inverse to modify the image. A sophisticated algorithm monitors and tracks actions and decisions made for each image. Subsequent sessions are tailored to test weakness areas.



Unit Exam



Simulator Course Screen



Content Progress Report

Innovative Solutions. Superior Training. Accelerated Performance.

www.safe-passage.com

info@safe-passage.com

Corporate Headquarters
333 Metro Park
Rochester, New York 14623
UNITED STATES
Tel: +1 585 292 4910
Fax: +1 585 292 4911

ATS - Aviation Training & Services
Luiz Faccini, 416 - 2º floor -
Guarulhos - SP - Brazil
07110-000
Tel: +55 11 2229-8938
Cel: +55 11 96631-6965

